

QUICK START GUIDE

PARTYBOX
STAGE320



HARMAN

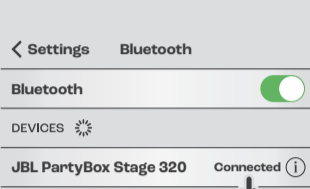


WHAT'S IN THE BOX

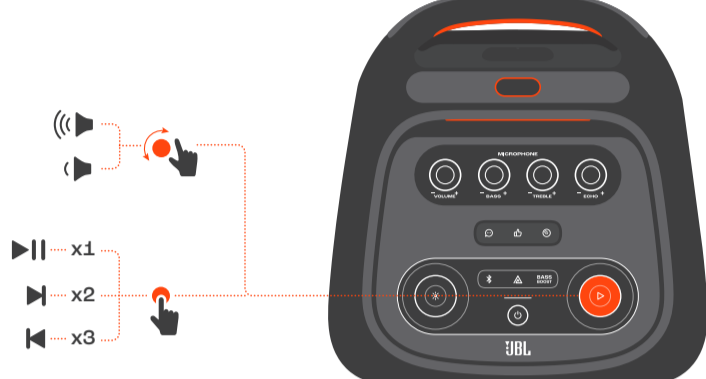


* Power cord quantity and plug type vary by regions.

BLUETOOTH PAIRING



PLAY



LIGHTSHOW



Apply lightshow presets and more with the JBL Partybox app.

APP



Download and install the JBL PARTYBOX app to get more from the product.



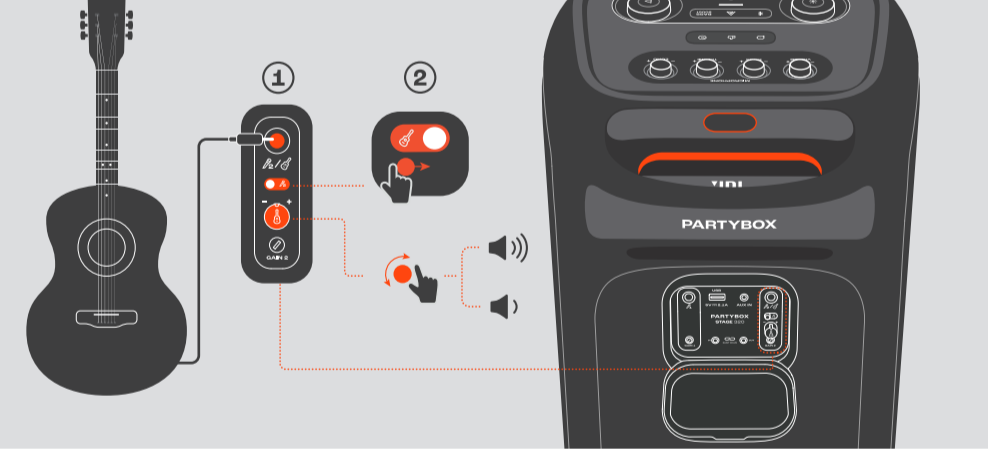
JBL PARTYBOX



MICROPHONE



GUITAR



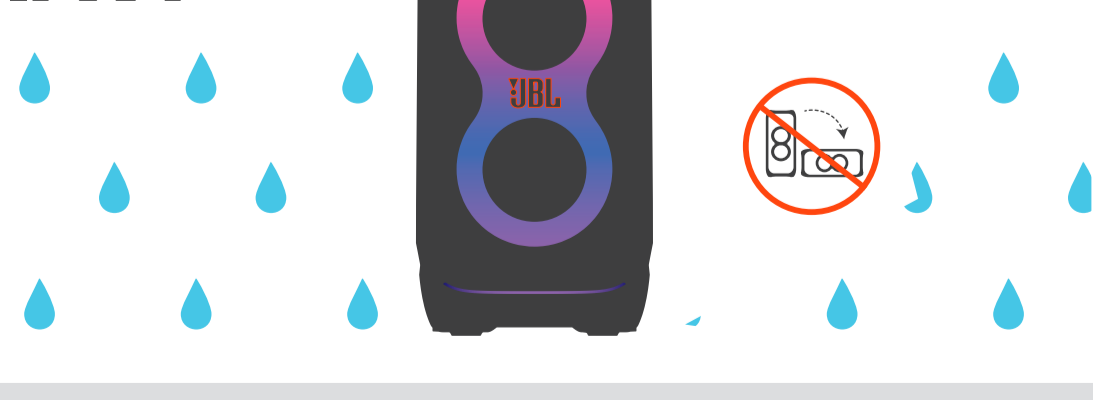
MULTI-SPEAKER CONNECTION



CHARGING



SPLASH PROOF IPX4



HANDLE



